

# HAMACHI

THE PSYCHOTIC KILLER



## credits

created by gavin oriley

programming assistance:  
reuben shea

debugging: matharoo &  
dph software

tileset artist: jestan

boss graphics:  
character kyle riley

music:  
adam haynes

Hamachi the Psychotic Killer (C) 2025 Gavin ORiley

## STORY

Hidden from the eyes of civilization Warlocks practice the forbidden arts of Black Magik and Demonology.

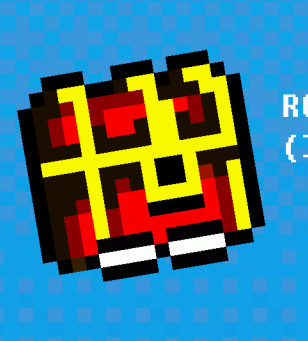
In their lust for domination over Earth, they summoned the blood thirsty entity known as " Demon Queen Deity "

To fuel and grow her Demonic Fury the Warlocks must help her feed on the souls of the living.

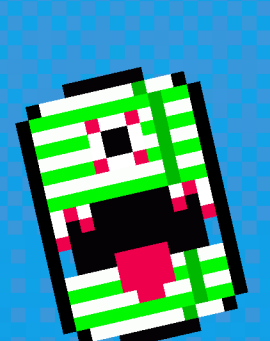
How would they accomplish such a genocidal plot without revealing themselves to the world?

Demonic Possession.

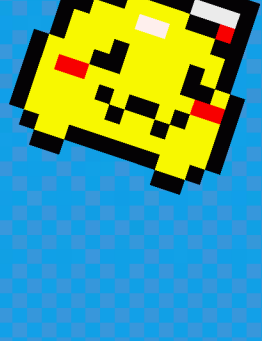
## CHARACTERS



OBSERVER  
(likes to walk)



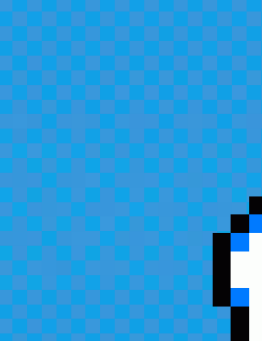
PUNNI  
(likes to hop)



ROYAL BLOOD  
(likes to run)



LANTERN SPAWN  
(likes to fly)



BLOOZE  
(very squishy)



PENELOPE POM POM PINK  
(likes to deliver sushi)



HAMACHI



DEMON QUEEN DEITY  
(easy travel form)

## CONTROLS



Arrow Keys - Movement



Jump to edges  
to LEDGE GRAB!



[Z] Key - Jump/Confirm



[X] Key - Attack!

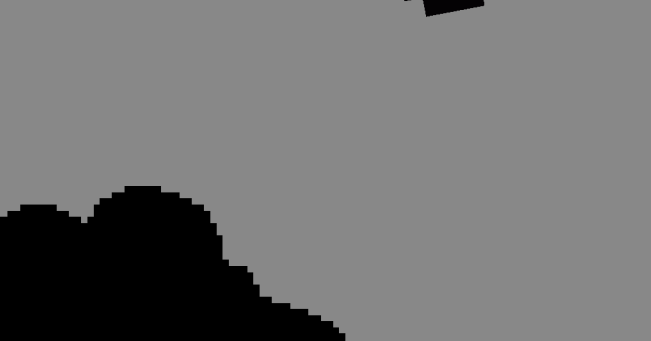


Double Tap and hold the  
direction youre walking  
in to DASH

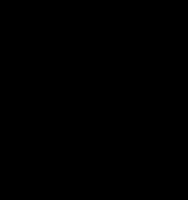
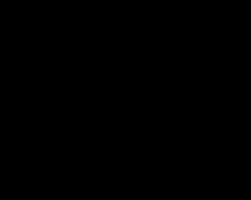


Press the UP ARROW to Enter  
Doors and Climb Ladders!

Killing residents reveals  
their soul, collect it to  
restore your health!



why would you do that though...?



what did they ever do to you...?

DID YOU KNOW HAMACHI CAN  
LIVE IN YOUR HOUSE??

Hes hiding somewhere on the  
Hamachi the Psychotic Killer  
Steam Store Page. If you find  
him, download him onto your  
computer and print him out to  
create the Hamachi Cube.  
Where you can sit him on your  
desk, a shelf, in the kitchen  
or the living room. He will  
always be with you, watching.

